

**Annex to Public Bar**  
30-42 Waring Street Street, Belfast

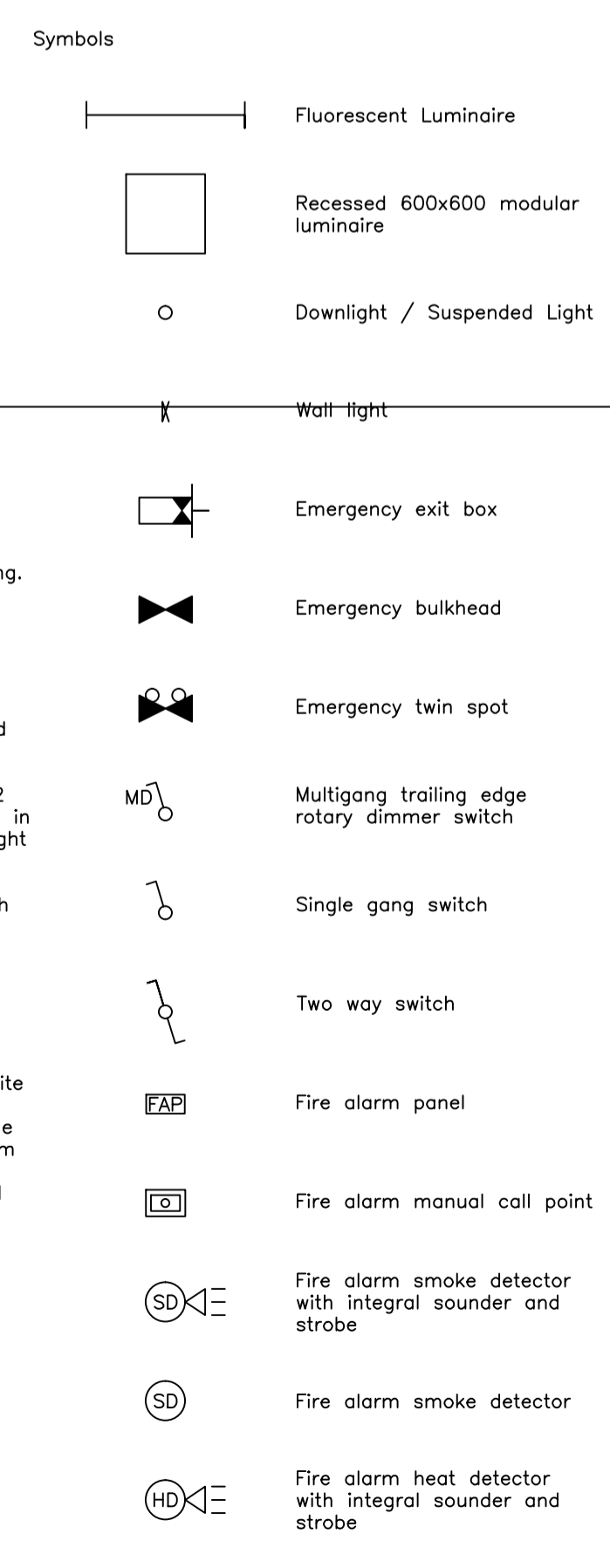
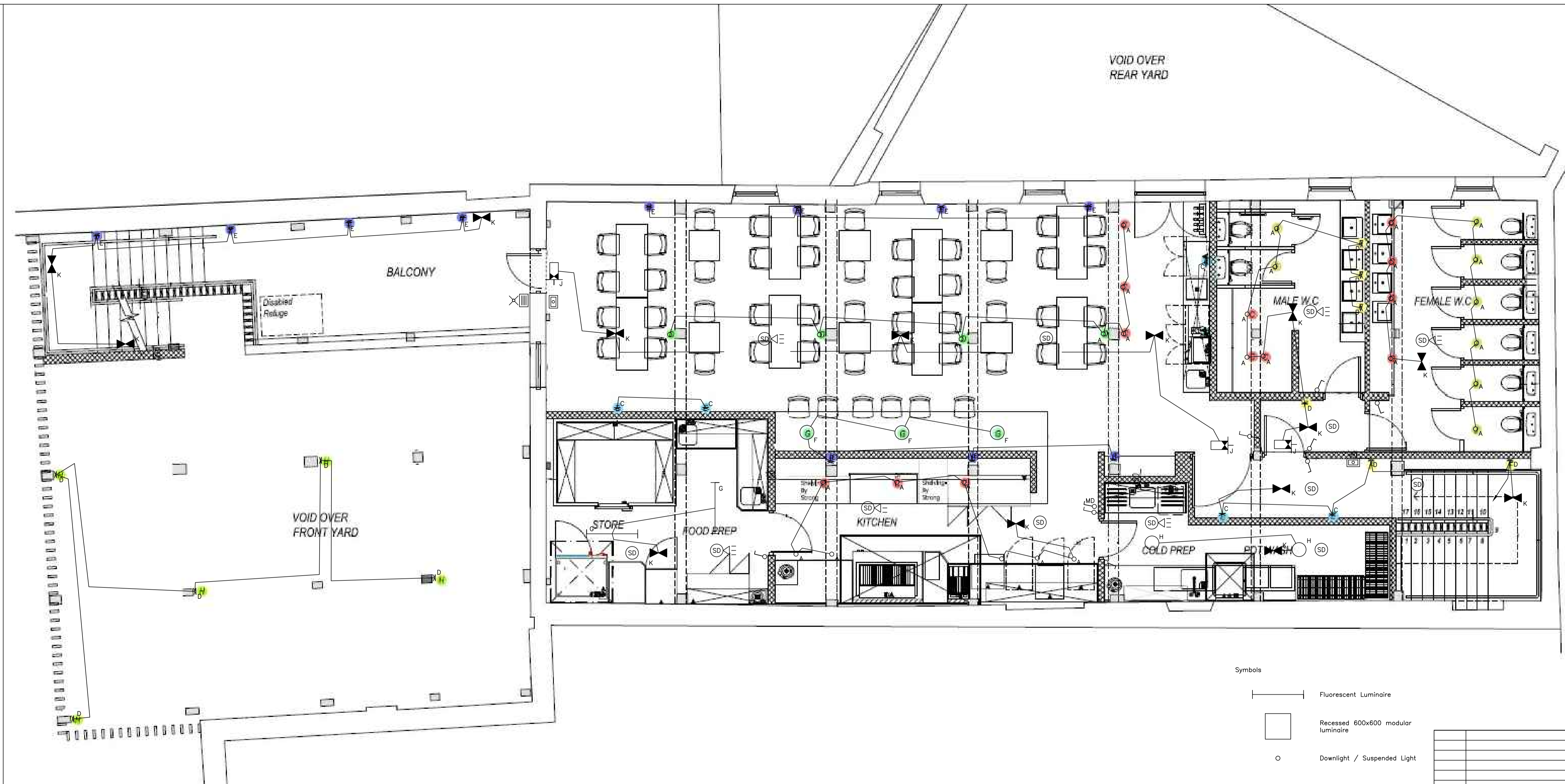
**Proposed Plan - Overall**

**Scale**  
1:100@A2

**L10**

**Date**  
August 2020

BUILDING CONTROL



**Luminaire Efficiencies**

Luminaire Efficiencies worst case areas

**Ground floor Bar**  
Requirement 22 lamp lumens per circuit watt.

Proposed  
11no Ref A 57.5 lamp lumens per circuit watt  
02no Ref B 57.5 lamp lumens per circuit watt  
04no Ref C 14 lamp lumens per circuit watt  
14no Ref D 10.4 lamp lumens per circuit watt

Totals  
Ref A 11x57.5 = 632.5  
Ref B 02x57.5 = 115.0  
Ref C 04x14 = 056.0  
Ref D 14x10.4 = 145.6  
949.1/31no luminaires  
30.62 lamp lumens per circuit watt.

**First floor Bar/Restaurant to open plan Kitchen**  
Requirement 22 lamp lumens per circuit watt.

Proposed  
15no Ref A 57.5 lamp lumens per circuit watt  
04no Ref C 14 lamp lumens per circuit watt  
07no Ref E 10.4 lamp lumens per circuit watt  
03no Ref F 10.4 lamp lumens per circuit watt

Totals  
Ref A 15x57.5 = 862.5  
Ref C 04x14 = 056.0  
Ref E 07x10.4 = 072.8  
Ref F 03x10.4 = 031.2  
1022.5/29no luminaires  
35.25 lamp lumens per circuit watt.

All other area of building have luminaire installed that match or better the required minimum lamp lumen / circuit watt

**Ref\_A**  
Lamp Lumens: 230lm  
Circuit Wattage: 4w  
Lamp Lumens / Circuit Watt = 57.5lm/w

**Ref\_B**  
Lamp Lumens: 230lm  
Circuit Wattage: 4w  
Lamp Lumens / Circuit Watt = 57.5lm/w

**Ref\_C**  
Lamp Lumens: 280lm  
Circuit Wattage: 20w  
Lamp Lumens / Circuit Watt = 14lm/w

**Ref\_D**  
Lamp Lumens: 415lm  
Circuit Wattage: 40w  
Lamp lumens / Circuit Watt = 10.4lm/w

**Ref\_E**  
Lamp Lumens: 415lm  
Circuit Wattage: 40w  
Lamp lumens / Circuit Watt = 10.4lm/w

**Ref\_F**  
Lamp Lumens: 415lm  
Circuit Wattage: 40w  
Lamp lumens / Circuit Watt = 10.4lm/w

**Ref\_G**  
Lamp Lumens: 3300lm  
Circuit Wattage: 39w  
Lamp lumens / Circuit Watt = 84.6lm/w

**Ref\_H**  
Lamp Lumens: 2050lm  
Circuit Wattage: 29w  
Lamp Lumens / Circuit Watt = 70lm/w

**Ref\_I**  
Dedicated emergency N/A

**Ref\_K**  
Dedicated emergency N/A

**Ref\_L**  
External luminaire N/A

**Schedule of Luminaires**

- A - Surface GU10 housing finished black fitted with an LED 6w lamp.
- B - Recessed GU10 housing finished chrome fitted with an LED 6w lamp.
- C - Picture wall light with 2no halogen capsule lamps
- D - Decorative wall bulkhead light with 40w ES lamp
- E - Top hat swan neck wall light with 40w ES lamp
- F - Top hat pendant with 40w ES lamp
- G - 1x35w high frequency TS IP65 fluorescent. Body in polycarbonate fitted with prismatic diffuser.
- H - 1x28w high frequency 2D IP65 surface mounted luminaire. Body in white polycarbonate fitted with prismatic polycarbonate diffuser.
- J - Maintained LED surface mounted exit luminaire with down legend and integral 3 hour battery
- K - Non-maintained LED surface mounted emergency bulkhead with prismatic diffuser and integral 3 hour battery.
- L - IP65 LED floodlight

**Notes**

1. All general lighting and site lighting circuits to be wired using 1.5mmsq PVC cables enclosed within galvanised conduit and trunking.
2. All general lighting and site lighting circuits to be connected as 10amp circuit ways using combined MCB/RCDs.
3. Lighting within all public spaces with the exception of dedicated emergency luminaires shall have a combined performance not less than 22 lamp lumens per circuit watt.
4. Lighting within the back of house toilets and staff areas with the exception of dedicated emergency luminaires shall have a combined performance not less than 55 lamp lumens per circuit watt.
5. Escape lighting to comply with BS5266 parts 1 and 7 1999.
6. All escape signage to comply with BS5499-1:2002
7. All electrical switches, sockets and controls etc must be positioned in accordance with diagram 5.6 of technical booklet R. In general light switches and manual call points shall be installed at 1050mm FFL and not within 350mm of an internal corner.
8. All fixed building services shall be commissioned in accordance with CIBSE commissioning code M 'Commissioning Management'
9. Sufficient readily understandable information will be provided to the building owner regarding the energy efficient operation, control and maintenance of all fixed building services.
10. A building log book shall be provided to the building owner upon completion in the format given in CIBSE TM31. The data used to calculate the TER and BER shall be recorded in the log book.
11. The exact location of all items of equipment shall be agreed on site prior to any installation taking place.
12. The fire alarm system shall be wired using 1.5mmsq flame resisting FP200 type cable fixed to the building structure at 300mm intervals.
13. The fire alarm system shall be analogue addressable open protocol to category L1 to comply with BS5839.

REVISION	DESCRIPTION	DRAWN	GM	CHECKED	GM	DATE
A	Revised as per comment from building control					NOV 13
SCALE						
1/50 @ A1		DATE	DATE	DATE	DATE	DATE

CLIENT

PROJECT  
DEERS HEAD

DRAWING  
EMERGENCY LIGHTING AND FIRE ALARM  
FIRST AND SECOND FLOORS

DRAWING NUMBER E2	ISSUE A
----------------------	------------

SES ELECTRICAL NI LTD  
7A INISHARGY ROAD  
KIRCUBBIN  
BT22 2RG